

Arbor Montessori School~Founded 1970

Monday, January 11, 2010

The Arbor Update



*Arbor was happy to
host fellow AMI friends
Christiane Salvenmoser
and Saskia Haspel
(L to R) last week.*

*They hail from
Vienna, Austria,
and teach at*

Montessori-Zentrum.

*It is always a joy to be
reminded of the
international scope of Maria
Montessori's work!*

Happenings

[CLICK HERE](#) for the
Basketball Schedule

Pizza Form Due Date
Today, January 11

Diversity Committee
Meeting TODAY!
**Monday, January 11,
7pm, Front Page News**

Spirit Nights:
**Tuesday, January 12
Thursday, January 14**

Tell your Friends and Neighbors!

Arbor has begun its admission process by offering Information Meetings and Tours for prospective parents. Please share this link to the [Admissions Visit Page](#) on our website with anyone whom you think may want to see our meeting and tour schedule.

Summer Art and Enrichment Camp

This year will offer two weeks of Enrichment Art and Activities Camp for ages 5-10 year olds. Camp will be offered in two separate sessions, May 31(Memorial Day) through June 4 and June 6 through June 11. Look for more information in the coming weeks.

Chess Club Openings!

We are now accepting a limited number of applications for Chess Club. Please click here for more information.

Music Soiree
Wednesday, January 27, 7pm

Coffee House
Thursday, January 14

Primary Coffee
Thursday, January 14

Rising Lower
 Elementary Coffee
Friday, January 15

Monday, January 18
 Martin Luther King Day
 School Closed
 No Holiday Camp

Pizza Day
Thursday, January 21

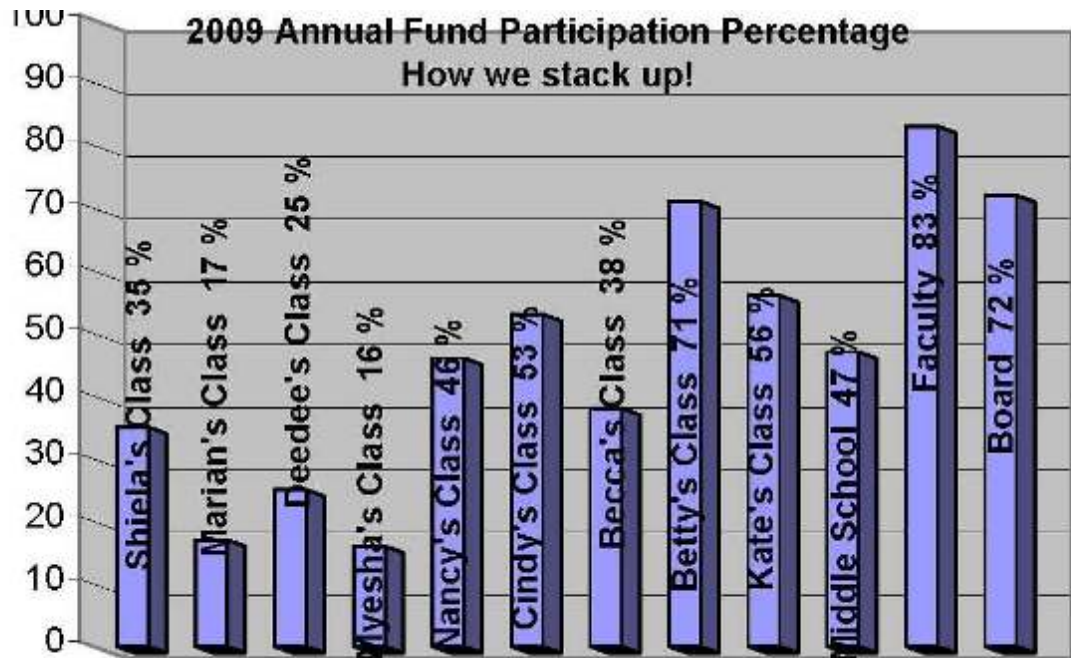
See the
[Events Calendar](#)
 for more
 "Happenings!"

Quick Links

- [School Life](#)
- [Arbor Website](#)
- [Middle School Website](#)
- [Update Archives](#)
- [Schoolicity](#)
- [Calendar](#)
- [School Forms](#)
- [Events Calendar](#)
- [Moore Farms](#)

Fundraising Matters at Arbor from Martha's Desk

Annual Fund 2009 ~ If you have not yet made a commitment please remember that everyone's support is needed. The Phone-a-Thon has begun; although the deadline for making your pledge is February 1, you have until May 1, 2010 to fulfill your commitment. Remember April and May are "no tuition" months which will help you with financing your pledge.



Gift Range	# of Gifts Resolved To Date
\$10,000	
\$ 5,000 - \$9,999	1
\$ 2,500 - \$4,999	1
\$ 2,000 - \$2,499	4
\$ 1,000 - \$1,999	20
\$ 750 - \$ 999	1
\$ 500 - \$ 749	18
\$ 100 - \$ 499	42
\$ 1 - \$ 99	17

Updated 01/26/2010

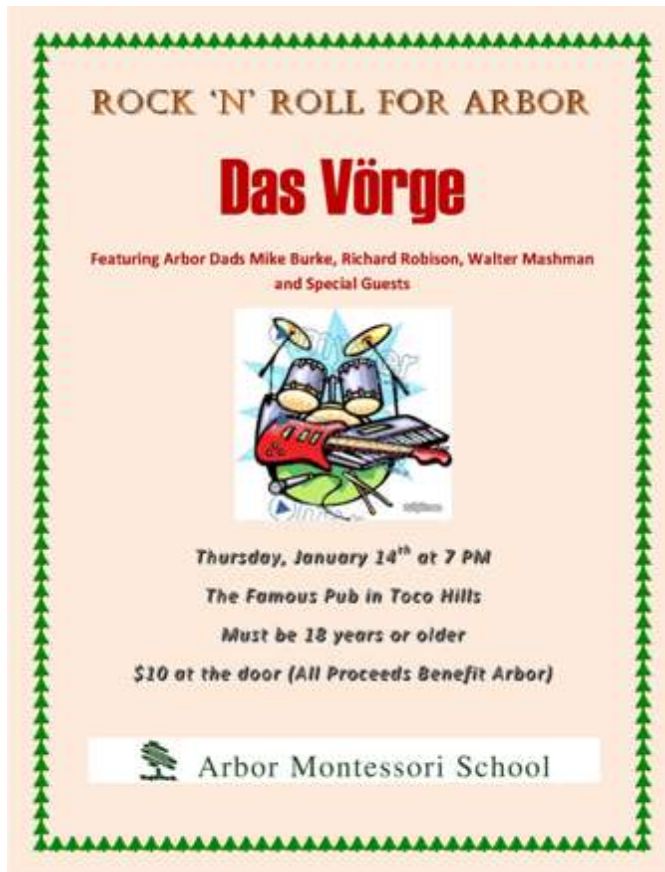
Your gift to the Annual Fund supports: *Faculty Education Funding*, tuition assistance, the Booster Club and unexpected expense increases or revenue shortfalls.

How Some of Your Dollars Were Put to Work

~by Becca Fernandez

This past year, I spent my FEF (*Faculty Education Fund*) money on two conferences. The first conference covered the most recent information on Asperger's and Autism Spectrum Disorders and ADHD. It was chock full of information and I have already shared much of it with other teachers at Arbor. The second was with our new hometown AMI Elementary trainer, J McKeever. J spent a Saturday covering ideas for follow-up work to elementary lessons. The conference included many practical tips and ideas that are not included in the traditional AMI training (no time!) My students benefitted from this conference the very next day I returned to school.

Arbor Spirit Night Fundraisers ~



Volunteers Corner ~ ...most growth happens outside the comfort zone; to our many parent volunteers thank you! Your service accomplishes wonderful things for everyone in our school. This week we are pleased to highlight the Wild/Chen family (written by Arbor dad, Mark Ellingson). [Click here](#) to read the latest installment of Volunteers Corner. Please volunteer today!

Please remember the excellence and vitality of Arbor is linked to the quality of our professional development and the economic diversity provided by your financial support. Thank you for your financial support and for all that you do for Arbor. If you have any questions about our fundraising programs or Parent Involvement, please contact [Martha Addison](#) in the Development Office.

Music Soirée Wed., Jan. 27, 7 pm, Music Room

The Arbor Music Soirée is a casual evening of musical sharing where children (and parents!) who sing or play a musical instrument may perform a favorite selection or two for an appreciative and supportive audience. Please visit the [Art and Music page](#) on our website to download the signup forms and view the soirée schedule. See you there!

Arbor Community Council (ACC)

NEXT ACC Meeting: Wednesday, February 3, 7:00 pm. In addition to our ACC meeting, we will have a guest presentation, "Playground Politics" from Julie Carnes, M. A., Clinical Coordinator, who served as the Educational Director at Arbor for 10 years and is AMI certified. All parents are welcome and encouraged to attend! To slate the ACC agenda, we need to hear your comments, ideas, suggestions and concerns by email by **January 19**. Sincerely, Your ACC Co-Chairs:

Vivian Cook, Primary:

vivianandgreg@hotmail.com

Julie Gazmararian, Lower Elementary:

jagazma@sph.emory.edu

Robyn Roberts, Upper Elementary:

robyn_kevin@yahoo.com

Darlene Mashman, Middle School:

dlmashman@aol.com

[Forward email](#)

✉ **SafeUnsubscribe®**

This email was sent to leslier@arbormontessori.org by leslier@arbormontessori.org.
[Update Profile/Email Address](#) | Instant removal with [SafeUnsubscribe™](#) | [Privacy Policy](#).

Email Marketing by



Arbor Montessori School | 2998 LaVista Road | Decatur | GA | 30033